

[Subscribe](#)[Past Issues](#)

Positive Spin – Newsletter #3

[View this email in your browser](#)

In this issue: // Ghetto Golf // BC-ISMRM 2017 // Money for post-docs! // Money for educational or research meetings!! // No money left over from Hawai'i!!! // Return to Guy's Tower // MRI Mark-I in Aberdeen // Placental MRI Workshop delivered //



B-fields & Beatles: British Chapter members Come Together for 23rd BC-ISMRM



[Subscribe](#)
[Past Issues](#)

[Translate](#) ▼

A lorra lorra laughs were had and even some good science at the **23rd annual BC-ISMRM meeting** in Liverpool in September.

There was a half-day workshop on regenerative medicine, whilst the main programme included sessions on: quantitative MR, cardiac imaging, paediatric MR, diffusion MR, perfusion MR and metabolism, as well as spirited debates on the clinical applicability of ASL, DTI and MR spectroscopy.

Congratulations to the prize-winners for delivering some fantastic talks, posters and poster pitches.

The **Best Talk** winners were:

- 1st – James Grist
- 2nd – Yolanda Ohene
- 3rd – Ben Hipwell

The **Poster Pitch** winners were:

- 1st – Alexandre Khrapitchev
- 2nd – Simon Walker-Samuel
- 3rd – Maria Dounavi

The **Poster** winners were:

- 1st – Joshua Freedman
- 2nd – Antoine Vallatos
- 3rd – Emma Biondetti

Social highlights included a session of **Ghetto Golf** and dinner at the **Cavern Club** with their second-cheapest Beatles tribute band. For more pictures, [follow this link to check out the gallery of photos \(and add your own\)](#).

[Subscribe](#)[Past Issues](#)

Upcoming Meetings

Post-docs! Apply for a Travel Bursary to ISMRM 2018: The Mansfield Research Innovation Award

Hopefully, you are well aware of the looming **abstract deadline** for ISMRM 2018: **8th November**. What you may not know is that the British Chapter have a **new travel bursary available to post-docs**.



Siemens Healthineers are the generous sponsor of the **Mansfield Research Innovation (MRI) Award**, which helps to enable top post-doc members of the British Chapter working in the areas of neurology, cancer, interventional radiology, molecular imaging, physics or engineering, to attend the annual ISMRM meeting.

The aim of the award is to **support ISMRM members who are too senior to qualify for trainee awards**, but too junior to have established posts. If you fall into this category (normally within ~5 years of finishing your PhD) and your abstract is in an appropriate area, **apply before December 1st** by emailing your submitted abstract(s) and a brief CV to Penny: penny.gowland@nottingham.ac.uk Final decisions will be made shortly after the meeting programme is announced in the spring.

[Subscribe](#)[Past Issues](#)

May Day & Tower

Our next get-together will be the **annual one-day postgraduate meeting at Guy's Tower in London**. The exact date will be confirmed soon, but is currently pencilled in for **May 2018**. This year the organising committee will be made up of students and post-docs. Anyone interested in **joining the committee** should contact Matthew: m.grech-sollars@imperial.ac.uk before 1st December 2017.

Money for hosting meetings – introducing the New Initiative Fund



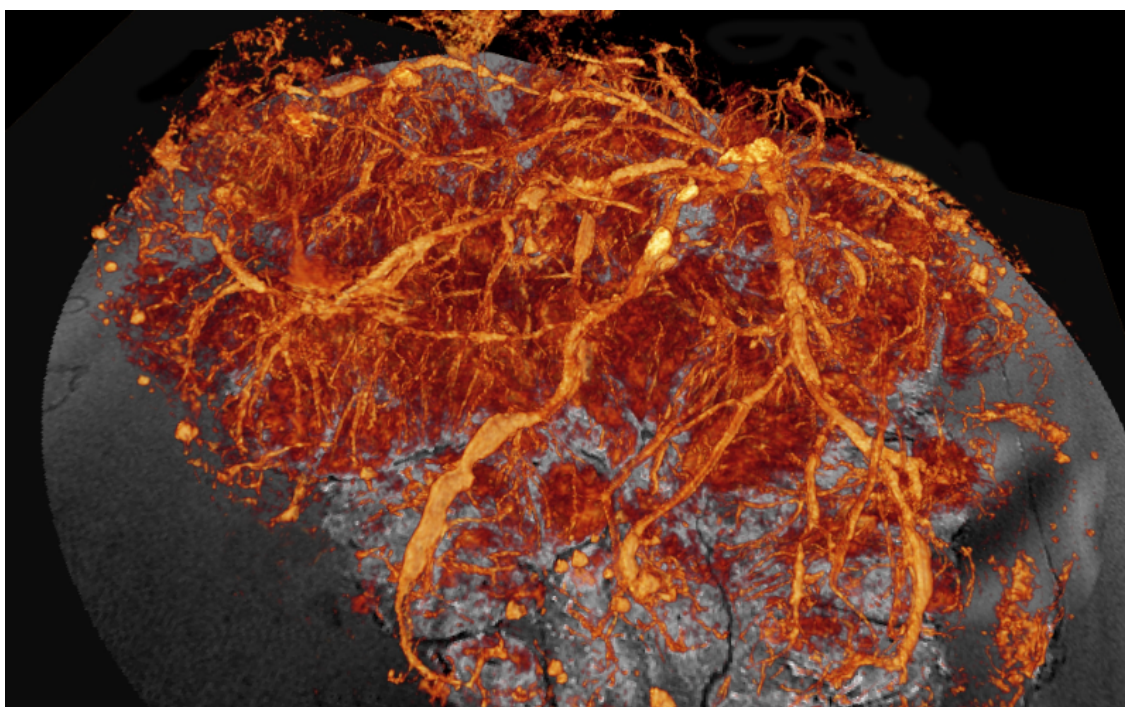
If you are a Full Member and you're going to be **hosting a national educational or research meeting**, on a topic which comes under the remit of the British Chapter, read on!

We have created the **New Initiative Fund**, which offers up to **£2,000 in financial support** to help with the running costs of your meeting. See the article below for a report from the very first Placental MRI Workshop, which was

[Subscribe](#)[Past Issues](#)

At the next British Chapter committee meeting we will consider any new requests for this support. **Please send in an application which describes the proposed activity, its relevance to the British Chapter and include costing.** Applications need to be sent to Andrew Blamire on andrew.blamire@newcastle.ac.uk by **1st December 2017**.

Inaugural Placental MRI Workshop born: 04.07.2017



The **very first UK-based Placental MRI Workshop** was hosted in July at **St. Thomas' Hospital** in London. 20 speakers presented at the workshop, including students, post-docs and leading experts in the field.

More than **80 delegates** attended the conference, the majority from up-and-down the UK, with some attendees travelling across from Paris and Barcelona. **Six student stipends were awarded** with support from the British Chapter **New Initiative Fund**.

Topics ranged from placental physiology, functional imaging of the placenta, challenges of placental imaging, an introduction to placental histopathology and methods for validating placental imaging techniques.

[Subscribe](#)[Past Issues](#)

did we ever have to come home?



Despite the gruelling long-haul flight, British Chapter members flocked to the other side of the globe for **ISMRM 2017 in April**. Luckily the destination was **Honolulu, Hawai'i**, which just about made-up for 20-hours of recycled aeroplane cabin air.

The prestigious **Mansfield Lecture**, which brought down the curtain on the conference, was given by our very own chair, **Penny Gowland**. Many other outstanding presentations were delivered by our members, whilst another highlight was of course our unofficial annual social known as **Gareth's Party**, taking place once again in another beautiful Irish bar. [Follow this link for more photos from ISMRM 2017.](#)

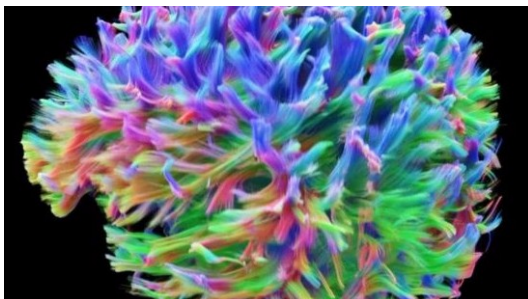
[Subscribe](#)[Past Issues](#)

Zoom in on... Aberdeen Biomedical Imaging Centre

Aberdeen is of course principally famous for its [seminal 1980 promotional video starring Telly Savalas](#), but did you know that in the same year Aberdeen University **built the world's first whole-body human MRI scanner?** There is a video about the "Mark-1" scanner, including interviews with Jim Hutchison, John Mallard and others, [which can be found here](#).

Pioneering work continues in Aberdeen, both on physics developments such as [Fast Field-Cycling MRI](#) and on medical applications, including diffusion and spectroscopy in breast cancer, computational neuroimaging of the developing and ageing brain and multi-modal MRI to investigate neural correlates of life-course risk factors for cognitive decline.

[Check out the Aberdeen Biomedical Imaging Centre here!](#)



Members' News

Readers of the BBC website may have spotted some familiar faces and tracts in July. A news story featured **Cardiff's axonal density maps at 3T** in healthy controls and multiple sclerosis. Derek Jones from the **National Microstructural**

[Subscribe](#)[Past Issues](#)

when you've been using binoculars."

[Full story here.](#)

News from your Committee

- The committee welcomed new members **Iain Wilkinson** (Sheffield) and **Andrew Peet** (Birmingham). **Andrew Blamire** (Newcastle) will be stepping down as Secretary.
- Official membership of the British Chapter now stands at 200. We know there are more members than this - where are the rest of you hiding? **Renew your membership** now (for free!): [complete the 2-minute form](#).

And finally... from the Editors

Thanks again for reading!

Want us to Zoom in on your department? Want to advertise a job? Want to contribute an article? Want to send us feedback? Want to send us abuse?! We'll take it all!

Send it to the email address below:

newsletter@ismrm.org.uk

Mary McLean (University of Cambridge)

Tom Roberts (KCL)

Photo credits: Eiffel Tower – AnneJ19, hands of cash – 401kcalculator.org

Want to change how you receive these emails?
You can [update your preferences](#) or [unsubscribe from this list](#)

MailChimp